

Travelling to Pinjarra Senior High School

**Your guide to
taking Transperth
to school**



Effective February 2024



Public Transport
Authority

 **Transperth**

Contents

- 4** Things you need to know
- 6** Your School Services map
- 8** School Special 717
- 10** School Special 718
- 12** School Special 722
- 13** School Special 723
- 15** School Special 726
- 17** School Special 727



Things you need to know

This guide has been prepared to help you plan your journey to school. It contains a general overview of the services that operate to and from Pinjarra Senior High School.

Each service in this brochure is accurate as at the date on the cover, however, as changes are made to school services throughout the year, we recommend you plan your journey before travelling.

Transperth runs two types of bus services via Pinjarra Senior High School: dedicated School Specials and regular Transperth bus Route 600.

Dedicated School Specials

As the name suggests, dedicated School Specials are for schools only and can only be caught if you are heading to or from school. They will only pick students up when heading to a school and drop students off when departing a school.

To help you plan your journey, this guide contains a map for each School Special that travels via Pinjarra Senior High School. School Specials 717, 718, 722, 723, 726 and 727 all travel there.

Routes 600

Route 600 services all members of the public, not just students. This route travels via Pinjarra Senior High School and may be the best option for you.

Planning your journey

While this guide will show you where bus services operate, to find out when they operate you will need to plan your journey. The best way to do that is by using the online JourneyPlanner, or download the Transperth app.

If you are planning your journey in the school holidays, don't forget to change the date on the JourneyPlanner to a school day. If you are planning your journey at the start of the year, wait until two weeks before school starts for the most accurate results as we change services at the beginning of each year.



Tracking your bus

You can use the Transperth app to track your bus or train in real time and see when it is due to arrive.

Download the app for iOS or Android.

Travelling with a Student SmartRider

All high school students are entitled to a Student SmartRider, which gives you access to free travel when travelling to school. The free travel is available on any trip Monday to Friday during the school year. You can continue to use your Student SmartRider outside of these times, however you will be charged the concession fare.

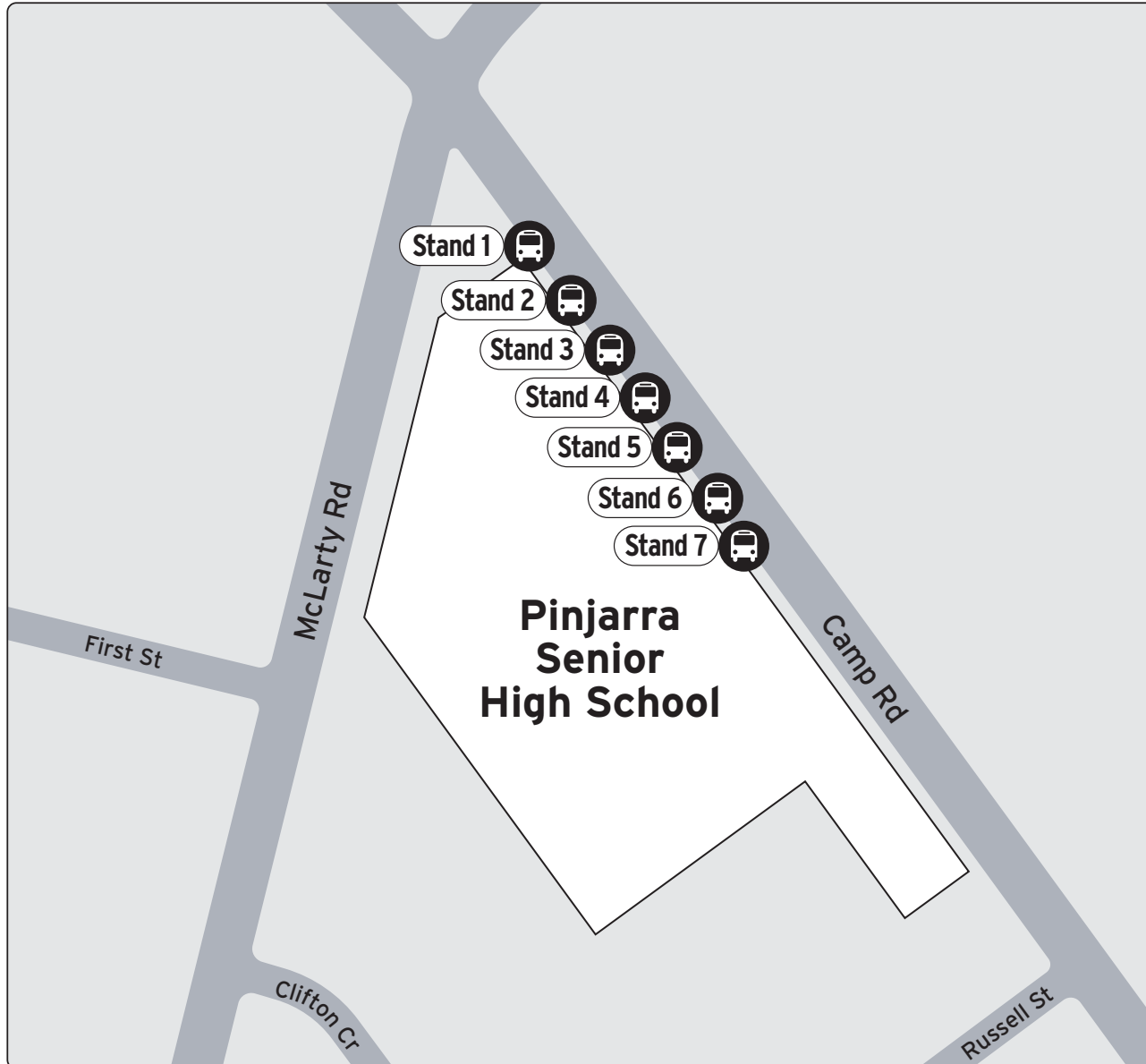
The free travel is only available if you have a Student SmartRider. If you don't have one or you forget your card you will need to purchase a concession cash ticket.

Need a Student SmartRider?

SmartRiders are issued by the school at the beginning of the school year. If you need to order a replacement card, just visit smartrider.monitorwa.com.au



Your school services map



Bus Services

Stand 1
600 to Mandurah Station
via Ravenswood

Stand 2
School Special 726
to Barragup
via Ravenswood

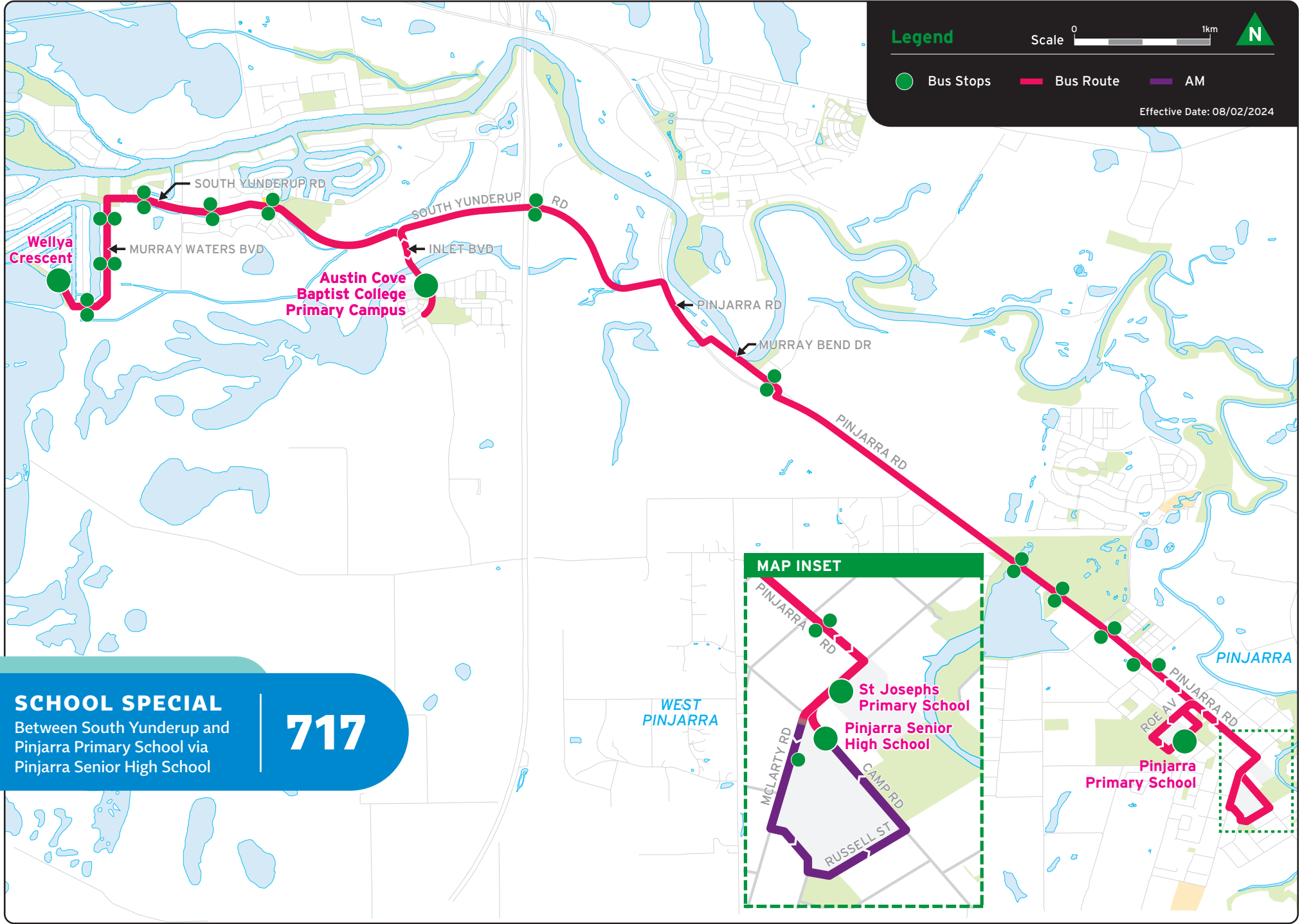
Stand 3
School Special 727
to Furnissdale
via Ravenswood

Stand 4
School Special 717
to South Yunderup

Stand 5
School Special 718
to South Yunderup

Stand 6
School Special 722
to Pinjarra West

Stand 7
School Special 723
to Barragup
via North Yunderup



Legend

Scale 0 1km



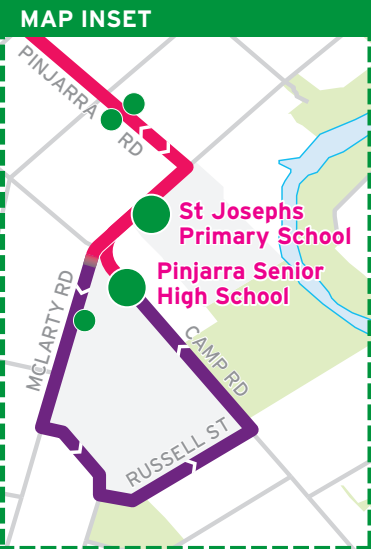
- Bus Stops
- Bus Route
- AM

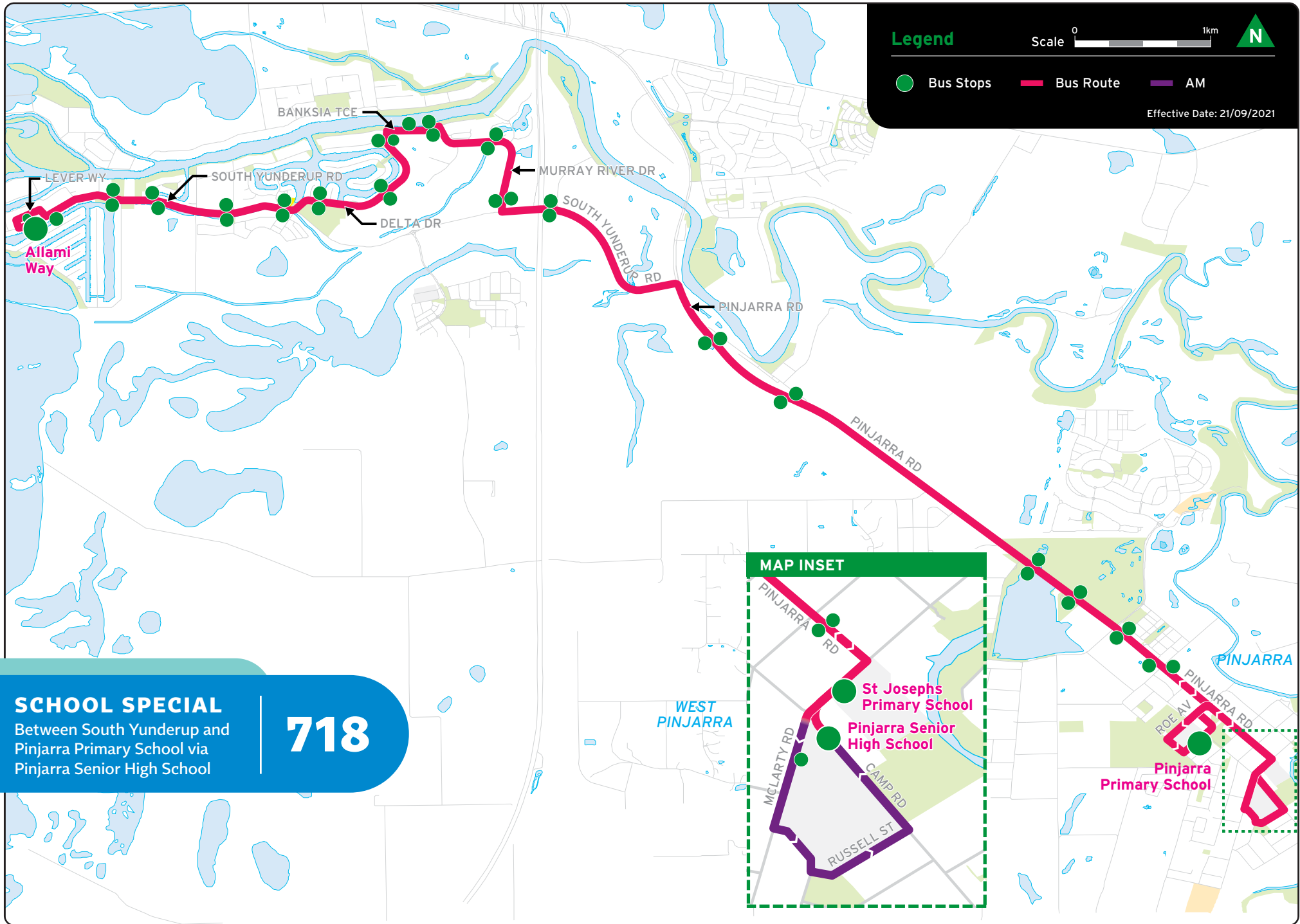
Effective Date: 08/02/2024

SCHOOL SPECIAL

Between South Yunderup and Pinjarra Primary School via Pinjarra Senior High School

717





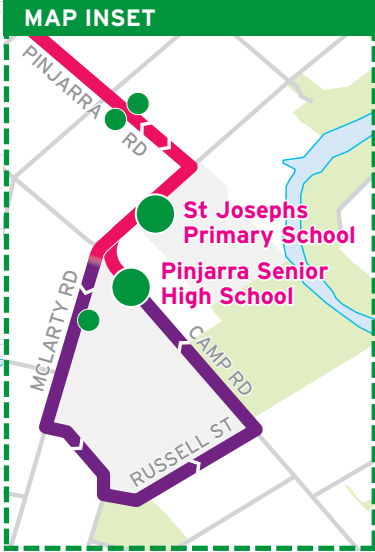
Legend

Scale 0 1km



- Bus Stops
- Bus Route
- AM

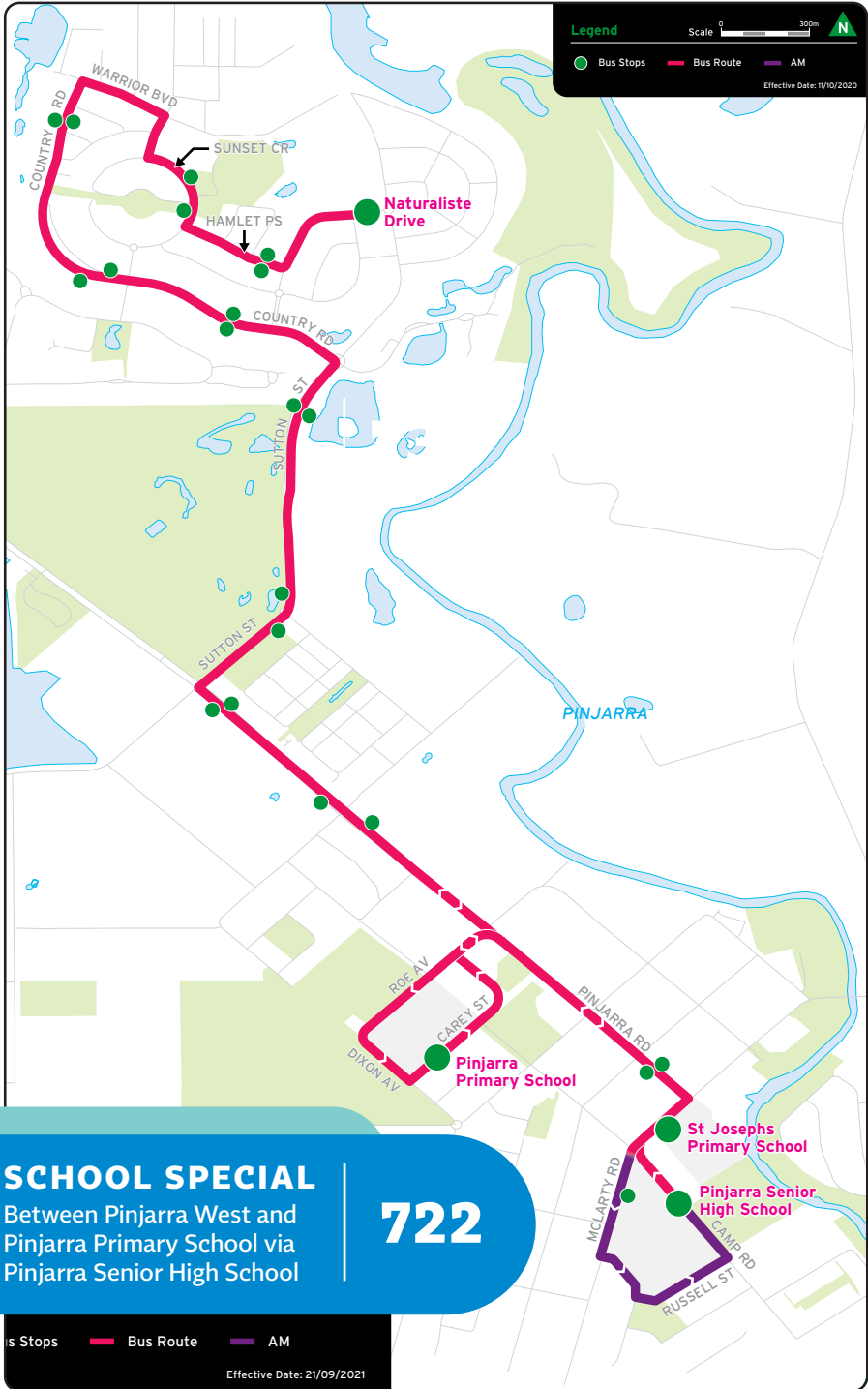
Effective Date: 21/09/2021



SCHOOL SPECIAL

Between South Yunderup and Pinjarra Primary School via Pinjarra Senior High School

718



Legend

- Bus Stops
- Bus Route
- AM

Scale 0 100m 200m

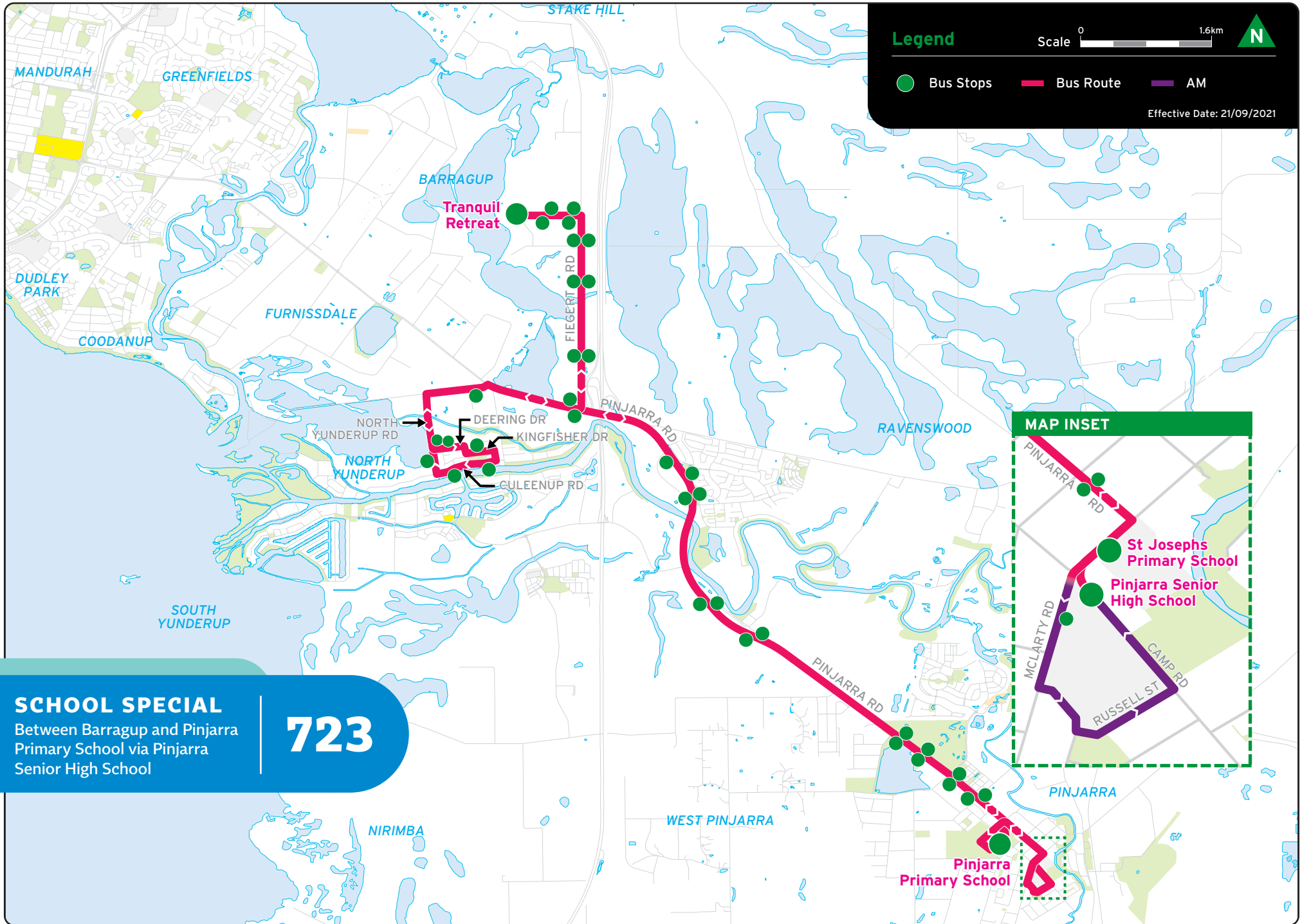
Effective Date: 11/10/2020

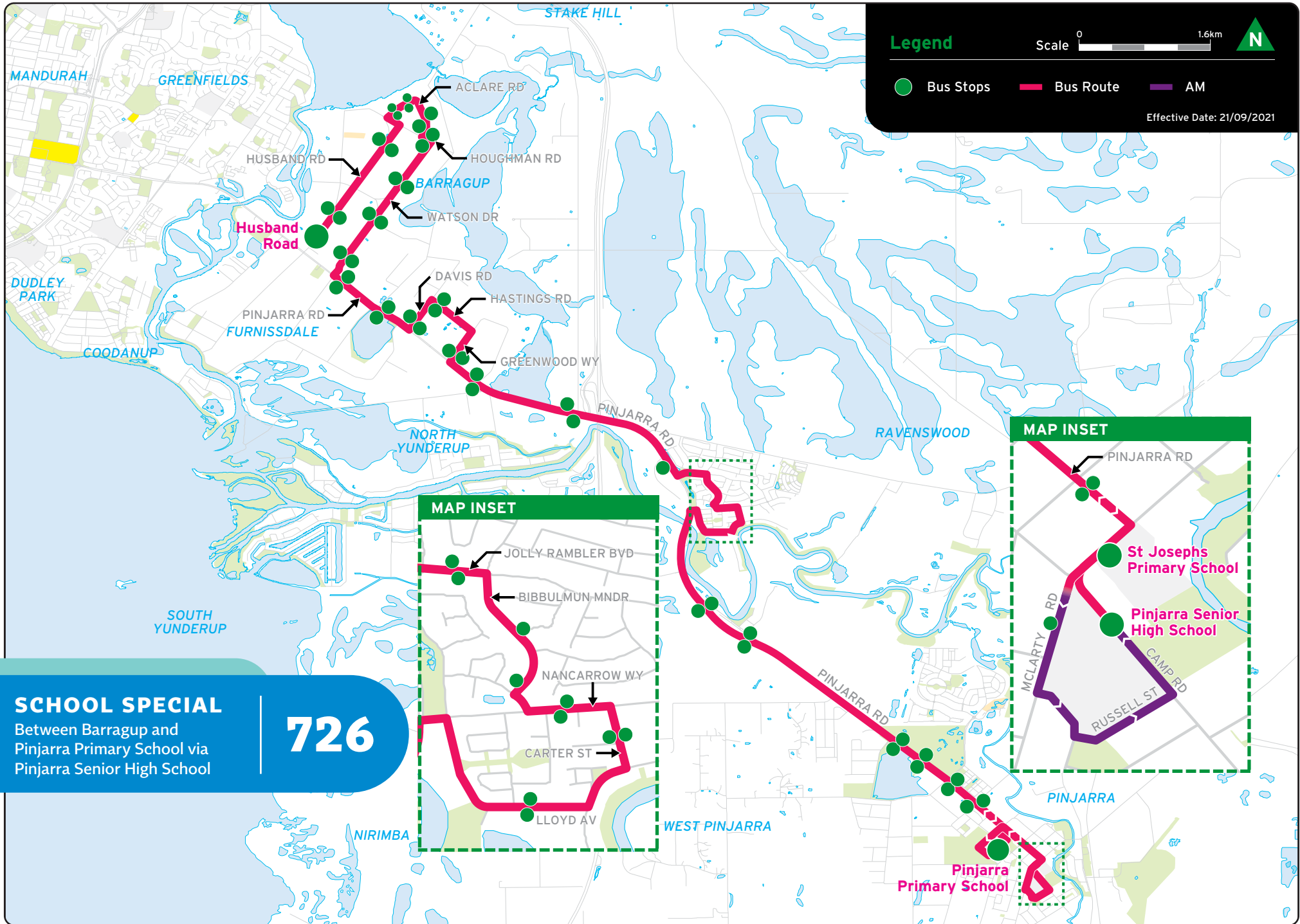
SCHOOL SPECIAL
 Between Pinjarra West and
 Pinjarra Primary School via
 Pinjarra Senior High School

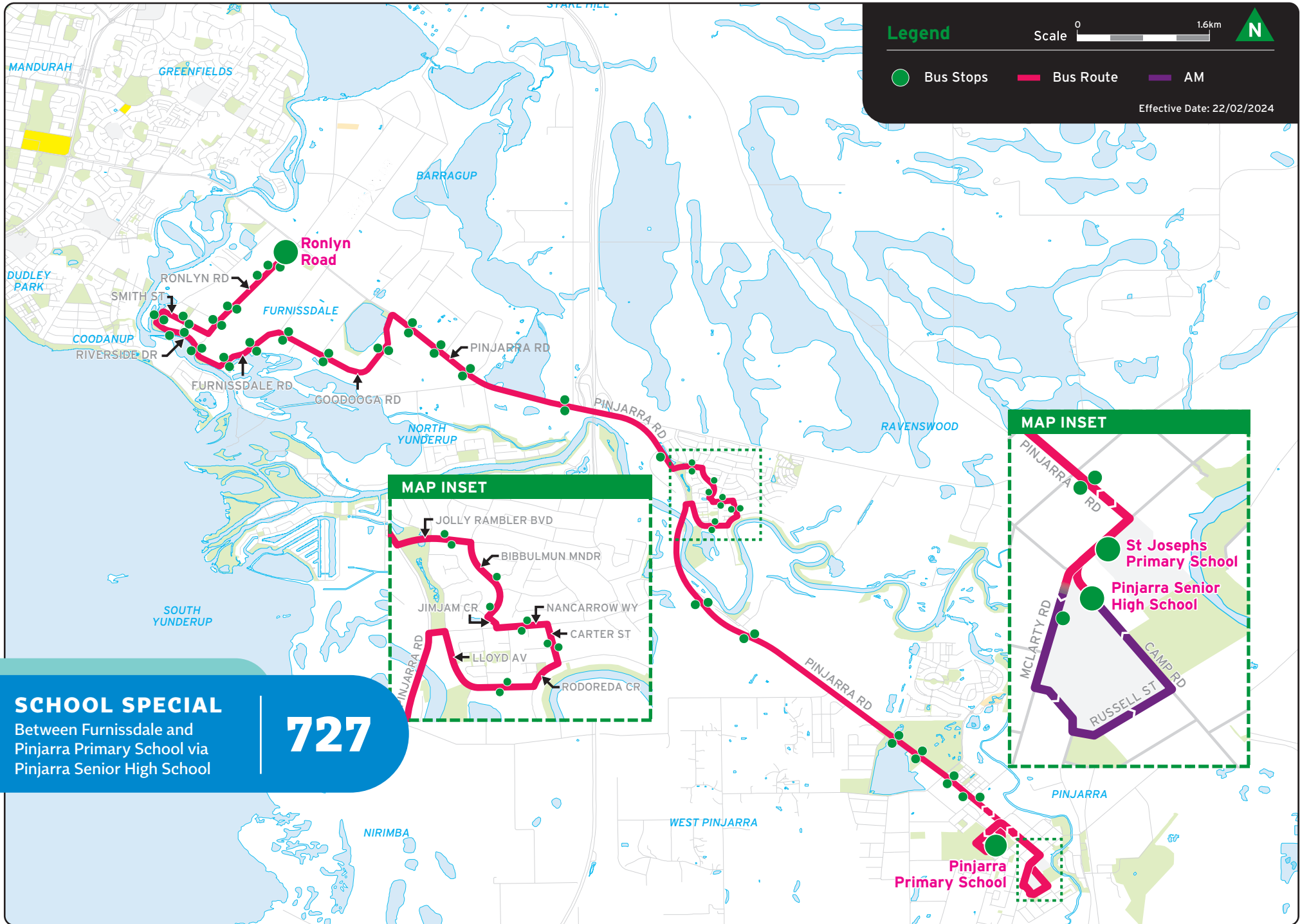
722

is Stops — Bus Route — AM

Effective Date: 21/09/2021







Legend

- Bus Stops
- Bus Route
- AM

Scale 0 1.6km ▲ N

Effective Date: 22/02/2024

SCHOOL SPECIAL

Between Furnissdale and Pinjarra Primary School via Pinjarra Senior High School

727

MAP INSET

JOLLY RAMBLER BVD
 BIBBULMUN MNDR
 JIMJAM CR
 NANCARROW WY
 CARTER ST
 LLOYD AV
 RODOREDA CR
 PINJARRA RD

MAP INSET

PINJARRA RD
 St Josephs Primary School
 Pinjarra Senior High School
 MCLARTY RD
 CAMP RD
 RUSSELL ST

Transperth Information

Transperth Website

transperth.wa.gov.au

Transperth InfoLine

13 62 13

National Relay Service (NRS)

Customers who are deaf or have a hearing or speech impairment can call through the NRS.

TTY service users call 133 667 and ask for 13 62 13.

Speak and Listen users call 1300 555 727

and ask for 13 62 13.

Translating and Interpreting Service

If you require an interpreter please call TIS on 13 14 50 and ask to be connected to 13 62 13

The Transperth App

Download the official Transperth app available for Android and iOS.

My Alerts

Sign up for My Account via our website or app and activate My Alerts to receive email notifications of changes or disruptions to services.

Follow Transperth



Disclaimer:

This document provides general information only and may be subject to change at any time without notice.

