



Government of **Western Australia**  
School Curriculum and Standards Authority

# Year 12 in 2027

Information for 2025 Year 10  
Students and their Parents

2025/27573



# Guide to key abbreviations

Abbreviation	Full term
ATAR	Australian Tertiary Admission Rank
OLNA	Online Literacy and Numeracy Assessment
SRMS	Student Records Management System
the Authority	School Curriculum and Standards Authority
TISC	Tertiary Institutions Service Centre
VET	Vocational Education and Training
WACE	Western Australian Certificate of Education
WASSA	Western Australian Statement of Student Achievement
WASN	Western Australian student number

# WACE Refreshment

- Modifications are made to the WACE requirements from time to time.
- This is to ensure the WACE remains a robust, rigorous and contemporary senior certificate that aligns with others across the nation and internationally.
- In December 2022, the Board of the Authority initiated a WACE Refreshment process.

# WACE Refreshment – process

## The WACE Refreshments:

- focus on responding to the changing landscape of education and society
- acknowledge emerging demands on senior secondary education and the effects of social, economic and global conditions on young people
- are ongoing and will be implemented over the coming years.

# WACE Refreshment – key elements

Key elements of the WACE Refreshment focus on:

- the range of courses that are offered to students and how curriculum and assessment connect
- the capabilities students develop and how we certify and report on student achievement
- how VET and endorsed programs are recognised and used for certification
- how to maximise equitable access to certification and the WACE.

# WACE Refreshments – VET

## The Board

- commissioned a comprehensive report on the appropriateness of Certificate IV and Diploma qualifications contributing to WACE achievement
- consulted widely with a range of stakeholders, including students, school principals across different demographics and metropolitan and regional locations, school systems and sector bodies, industry training councils, TAFE colleges, private training providers, regulatory and policy setting bodies in the training sector, and representatives from the tertiary sector.

# WACE Refreshments – endorsed programs

## The Board

- commissioned a comprehensive report on endorsed programs including UDEPs contributing to WACE achievement
- consulted widely with a range of stakeholders, including students, school principals across different demographics and metropolitan and regional locations, school systems and sector bodies, industry training councils, TAFE colleges, private training providers, regulatory and policy setting bodies in the training sector, and representatives from the tertiary sector.

## WACE Refreshments – Year 12s in 2027

Two WACE Refreshments will be introduced for Year 12 students completing the WACE in 2027 relating to VET and endorsed programs. From 2027:

- Diploma-level qualifications will no longer receive unit equivalence towards WACE achievement. This supports quality outcomes for students undertaking VET as part of their WACE studies.
- Students selecting a Tertiary Preparation Endorsed Program (TPEP) will be required to complete at least one Year 12 ATAR course to achieve at least one unit equivalent towards WACE achievement. The decision reflects the expectation the expectation that students selecting a TPEP have aspirations for university entrance.



## The WASSA – All students

All students receive a Western Australian Statement of Student Achievement (WASSA) when they complete Year 12.

The WASSA:

- formally records a student's achievement in every course, qualification and program that the student has completed in senior secondary schooling
- provides evidence of achievement.

# The WACE

- The Western Australian Certificate of Education (WACE) is awarded to students who have successfully completed senior secondary schooling in WACE studies and have met the WACE requirements.
- The majority of students in Western Australia achieve the WACE.
- Study towards the WACE can be undertaken over a lifetime.

# WACE requirements

Students must:

- complete one of three course combination options
  - complete at least four Year 12 ATAR courses OR
  - complete at least five Year 12 General courses and/or ATAR courses or equivalent OR
  - complete a Certificate II (or higher) VET qualification in combination with ATAR, General or Foundation courses
- demonstrate the literacy and numeracy standards
- meet the requirements for breadth and depth of study
- meet the achievement standard.

# Literacy and numeracy standard requirement

Students must demonstrate minimum standards of literacy and numeracy by either:

- demonstrating the standard through the Online Literacy and Numeracy Assessment (OLNA); or
- prequalifying in reading, writing and numeracy through the Year 9 NAPLAN and being exempted from that component in the OLNA.



## Breadth and depth requirement

Students must complete a minimum of 20 units or the equivalent, including:

- a minimum of ten Year 12 units or the equivalent
- four units from an English learning area course, post-Year 10, including at least one pair of Year 12 units from an English learning area course
- one pair of Year 12 units from List A
- one pair of Year 12 units from List B.



## Achievement standard requirement

Students must achieve 14 C grades or higher (or equivalents) in Year 11 and Year 12 units, including at least six C grades (or equivalents) in Year 12 units.

# Study options

Students are offered three study options which they can mix and match:

- WACE courses (four course types – ATAR, General, Foundation and VET industry specific)
- VET programs
- endorsed programs.



## Sample study program – Jen

Jen enjoys puzzles and problem solving and wants to study architecture or engineering at university. She loves being part of a team and wants a career that will combine her creative and critical thinking skills.

Year 11	
AECHE	Chemistry
AEDDES	Design
AELIT	Literature
AEMAM	Mathematics Methods
AEMAS	Mathematics Specialist
AEPHY	Physics

Year 12	
ATCHE	Chemistry
ATDES	Design
ATLIT	Literature
ATMAM	Mathematics Methods
ATMAS	Mathematics Specialist
ATPHY	Physics



## Sample study program – Tim

Tim is also thinking about a career in architecture in the long term, but he is planning to go to TAFE to get a qualification in drafting first. Tim does not need an ATAR, but he wants to try some ATAR courses.

Year 11	
AEDS	Design
AEMAA	Mathematics Applications
GEAIT	Applied Information Technology
GEENG	English
Cert II	Building and Construction
ADWPL	Workplace Learning (2 unit equivalents)

Year 12	
ATDES	Design
ATDES	Mathematics Applications
GTAIT	Applied Information Technology
GTENG	English
Cert II	Building and Construction
ADWPL	Workplace Learning (2 unit equivalents)



## Sample study program – Alex

Alex loves food and cooking and plans to follow that passion into a career. He likes thinking on his feet and feels he is suited to a fast-paced restaurant kitchen. Alex is aiming for an apprenticeship and enrolment at a TAFE after school.

Year 11	
GEELD	English as an Additional Language/Dialect
GEFST	Food Science and Technology
GEHEA	Health Studies
GEMAE	Mathematics Essential
GESIP	Science in Practice
ADCS	Community Service (two unit equivalents)

Year 12	
GTELD	English as an Additional Language/Dialect
GTFST	Food Science and Technology
GTHEA	Health Studies
GTMAE	Mathematics Essential
GTSIP	Science in Practice
ADCS	Community Service (two unit equivalents)

## Sample study program – Michael

Michael likes food and entertaining, but food preparation is not his strong suit. While he's thinking about a career in hospitality, he doesn't know whether he wants to go to TAFE or straight to work.

Year 11	
GEENG	English
GEMMS	Marine and Maritime Studies
GEMUS	Music
GEREL	Religion and Life
Cert II	Hospitality
ADWPL	Workplace Learning (2 unit equivalents)

Year 12	
GTENG	English
GTMMS	Marine and Maritime Studies
GTMUS	Music
GTREL	Religion and Life
Cert II	Hospitality
ADWPL	Workplace Learning (2 unit equivalents)

## Sample study program – Sam

Sam likes being around people and would love to use their people skills working in an office. Sam wants to improve their literacy and numeracy skills and get ready for the workplace.

Year 11	
GECEM	Careers and Employability
GEENG	English
GEHAS	Humanities and Social Sciences in Action
GEMDT	Materials Design and Technology (Wood)
GEMAE	Mathematics Essential
ADCS	Community Service (two unit equivalents)

Year 12	
GTCEM	Careers and Employability
GTENG	English
GTHAS	Humanities and Social Sciences in Action
GTMDT	Materials Design and Technology (Wood)
GTMAE	Mathematics Essential
ADWPL	Community Service (two unit equivalents)

## Sample study program – Franki

Franki wants to run his own business. He enjoys designing and making a range of clothes and looks forward to pursuing a career in fashion. Franki is confident about his creative abilities and wants to take advantage of courses that will help his entrepreneurial dreams.

Year 11	
AEBME	Business Management and Enterprise
AEDS	Design
GEENG	English
GEMDT	Materials Design and Technology (Wood)
Cert II	Business
ADWPL	Workplace Learning (two unit equivalents)

Year 12	
ATBME	Business Management and Enterprise
ATDES	Design
GTENG	English
GTMDT	Materials Design and Technology (Wood)
Cert II	Business
ADWPL	Workplace Learning (two unit equivalents)



## Sample study program – Sue

Sue wants to become an archaeologist and has decided to complete a Tertiary Preparation Endorsed Program (TPEP). Taking a TPEP means Sue must complete at least one ATAR course; she has chosen five.

Year 11	
AEAUS	Auslan
AECHE	Chemistry
AEGEO	Geography
AEHIA	Ancient History
AELIT	Literature
PECUP2	Academic Literacies
PECUP3	Mathematics

Year 12	
AEAUS	Auslan
AECHE	Chemistry
AEGEO	Geography
AEHIA	Ancient History
AELIT	Literature
PECUP4	Society and Cultural Studies
PECUP5	Science



## Sample study program – Dev

Dev hopes to pursue a career in public policy and is looking forward studying Arts and Humanities at university. He is choosing a TPEP with a mix of General and ATAR courses.

Year 11	
AEECO	Economics
AEPAL	Politics and Law
GEENG	English
GEHEA	Health Studies
GEMPA	Media Production and Analysis
PMUFTH	FlexiTrack High (over two years)

Year 12	
AEECO	Economics
AEPAL	Politics and Law
GEENG	English
GEHEA	Health Studies
GEMPA	Media Production and Analysis
PECUP5	FlexiTrack High (over two years)



## Sample study program – Ian

Ian wants to become a primary school teacher. He is working towards a Queen's Scout Award and might use it as an endorsed program (four unit equivalents). His course selection starts with five WACE courses.

Year 11	
AEBLY	Biology
AEENG	English
AEGEO	Geography
AEMAM	Mathematics Methods
GECFC	Children, Family and the Community

Year 12	
ATBLY	Biology
ATENG	English
ATGEO	Geography
ATMAM	Mathematics Methods
GECFC	Children, Family and the Community





## Sample study program – Elena

Elena is not sure of what she wants to do after school, so her subject selection is based on what the Year 10 courses she likes. Her plan is to do her best and be well positioned by the end of Year 12.

Year 11		Year 12	
GEACF	Accounting and Finance	GTACF	Accounting and Finance
GEBME	Business Management and Enterprise	GTBME	Business Management and Enterprise
GEENG	English	GTENG	English
GEMAE	Mathematics Essential	GTMAE	Mathematics Essential
ADCS	Community Service (two unit equivalents)	ADCS	Community Service (two unit equivalents)

## Sample study program – Lou

Lou is working towards demonstrating the literacy and numeracy standard. He is starting his course selection with Foundation units and a Certificate II VET qualification.

Year 11		Year 12	
FEAIT	Applied Information Technology	FTAIT	Applied Information Technology
FECAE	Career and Enterprise	FTCAE	Career and Enterprise
FEENG	English	FTENG	English
FEMAT	Mathematics	FTMAT	Mathematics
Cert II	Automotive Vocational Preparation	Cert II	Automotive Vocational Preparation



## Sample study program – Kim

Kim plans a career in the travel industry and wants to continue learning Punjabi as a second language. She enjoys art and is very involved in a local photography club as a recreational pursuit.

Year 11		Year 12	
AEENG	English	ATENG	English
AEHBY	Human Biology	GTBME	Business Management and Enterprise
AEPSL	Punjabi: Second Language	GTENG	English
AEVAR	Visual Arts	GTMAE	Mathematics Essential
GEPES	Physical Education Studies	ADCS	Community Service (two unit equivalents)
ADRP	Recreational Pursuits (two unit equivalents)	ADRP	Recreational Pursuits (two unit equivalents)

# Australian Tertiary Admission Rank (ATAR) courses

These courses:

- are examined by the School Curriculum and Standards Authority (the Authority)
- are used by the Tertiary Institutions Service Centre (TISC) to calculate a student's Australian Tertiary Admission Rank (ATAR).

There are written examinations for all ATAR courses. Students must complete the written examination.

There are practical examinations for some ATAR courses. Students must complete both examinations in these courses.

## Completing ATAR courses

Students enrolled in a Year 12 ATAR course pair of units are required to sit the written and, if the course has one, practical examination.

Students who do not sit the examination will **not**:

- have a course mark or grade recorded on their WASSA
- receive an ATAR course report
- have the pair of units completed in that year contribute towards any of the WACE requirements.

# General courses

These courses:

- are not externally examined
- have an externally set task (EST) which is set by the Authority
- are designed for students who are typically aiming to enter further vocationally based training or the workforce directly from school.

# Online language enrolment applications

To enrol in a WACE language course, the Authority requires all students to complete an application for permission to enrol. Students submit their language application in the student portal. In their online language enrolment application, students will be assessed against three criteria:

- Education
- Residency and/or time spent in-country
- Use of the language for communication outside the language classroom.

# Foundation courses

These courses:

- focus on functional literacy and numeracy skills, practical work-related experience and personal skills
- are not an alternative senior secondary pathway
- are for students who have not been able to demonstrate the minimum standard for literacy and/or numeracy before Year 11 and who require significant support
- have an externally set task (EST) set by the Authority.



## VET industry specific courses

These courses:

- include a full VET qualification and mandatory workplace learning
- contribute towards the WACE as course units
- qualifications undertaken through VET industry specific courses can be used to meet the Certificate II (or higher) component of the WACE
- the workplace learning component of the course contributes as unit equivalents towards the WACE.

## Preliminary courses

The Authority provides Preliminary courses for students who have been identified as having a:

- learning difficulty and/or an intellectual disability, and
- recognised disability under the *Disability Discrimination Act 1992*.

Preliminary courses do not contribute to the WACE, but a student doing Preliminary courses may also undertake studies that do contribute to the WACE.



# Vocational Education and Training (VET)

VET is nationally recognised and enables students to gain qualifications for all types of employment, and specific skills to help them in the workplace or in further training.



## VET contribution to the WACE

- As part of the minimum WACE requirements, a student may complete a Certificate II or higher in combination with ATAR, General or Foundation courses.
- Studying VET can provide up to eight units towards the number of course units students need to complete to achieve their WACE.
- Students will typically enrol in four or five additional ATAR, General or Foundation courses to meet the WACE requirements.
- Students who do not enrol in at least four Year 12 ATAR courses or at least five Year 12 General courses and/or ATAR courses (i.e. their program of study includes one or more Foundation course/s in Year 12) must also complete a Certificate II or higher to achieve the WACE.

# VET and the WACE

## Standard

VET credit transfer reduces the number of course units in which a C grade is required.\*

VET industry specific courses contribute in the same manner as a C grade or higher in other WACE course units.

## Breadth

VET industry specific courses or VET credit transfer programs do not contribute to the breadth requirement.

## Depth

VET credit transfer contributes towards the depth requirement as unit equivalence.\*

\*A maximum of eight unit equivalents can contribute towards the WACE (standard and depth requirements) if completed through a VET credit transfer arrangement.

# Endorsed programs

These programs:

- provide access to areas of learning not covered by WACE courses or VET programs and contribute to the WACE as unit equivalents
- are for students wishing to participate in programs that are delivered in a variety of settings by schools, workplaces, universities and community organisations.

## Endorsed programs and the WACE

Endorsed programs can be used to:

- contribute towards the depth requirement and the achievement standard requirement of the WACE
- count as a maximum of four unit equivalents towards the WACE – two unit equivalents in Year 11 and two unit equivalents in Year 12.

The list of endorsed programs is available on the Authority website <https://senior-secondary.scsa.wa.edu.au/syllabus-and-support-materials/endorsed-programs>.

# Categories of endorsed programs

There are four categories of endorsed programs, which differ in respect to the developer, the type of evidence required for determining student achievement and the quality assurance process.

These categories are:

- Authority-developed endorsed programs
- Provider-developed endorsed programs
- School-developed endorsed programs
- Tertiary preparation endorsed programs.



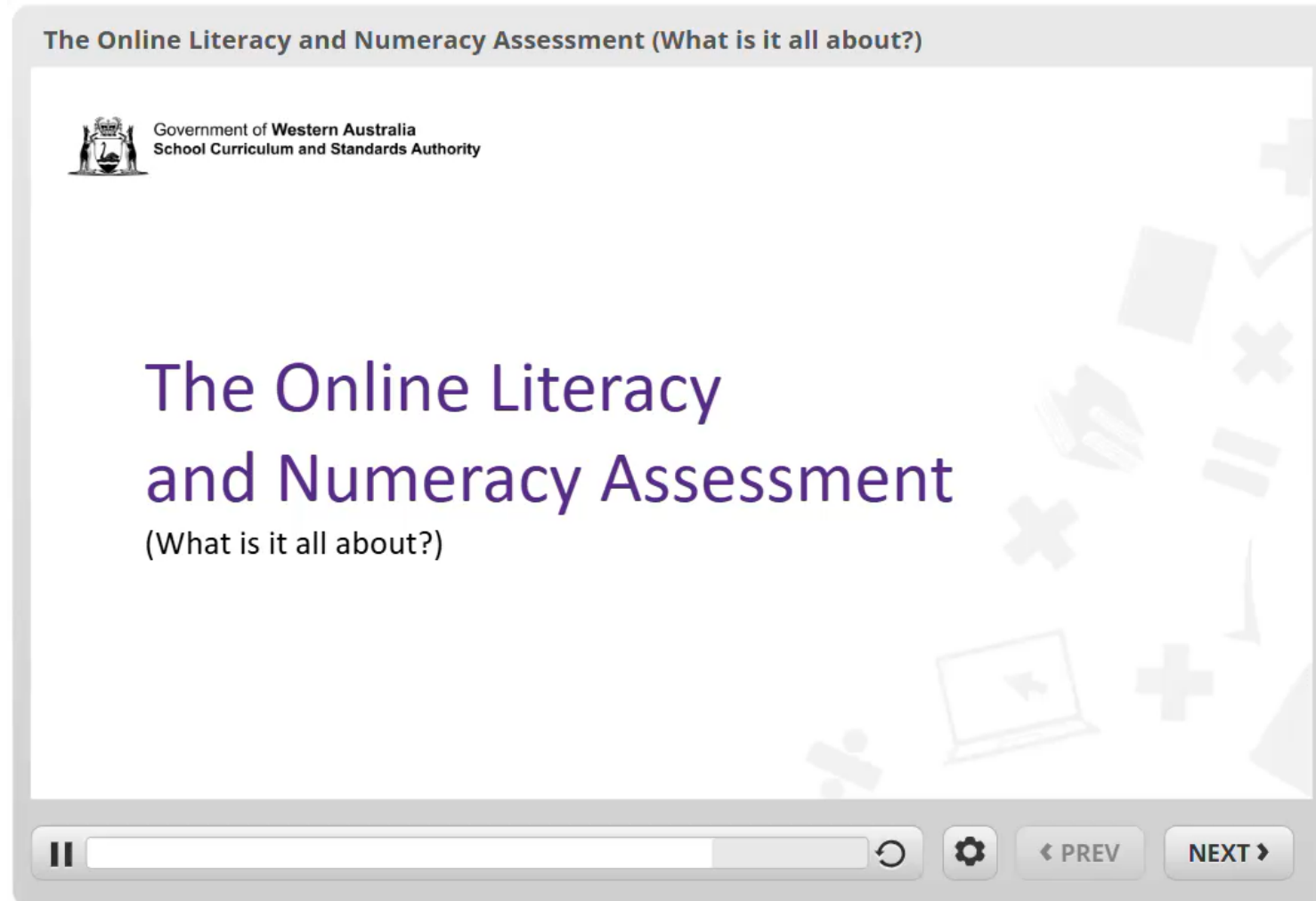
## Changing courses in Years 11 and 12

- The Authority publishes dates about changing enrolments in its *Activities Schedule*.
- There are points in the semester after which students should not change courses because it would be unlikely they could complete the assessment program.

## Changing courses and withdrawing from courses

- Changing means students replace one course enrolment with another.
- Withdrawing means students are no longer studying a course.
- If students withdraw from a course in Year 12, their enrolment course for the year is not recorded on their WASSA. This means no credit is given for the work done for the year's units prior to dropping the course.

# OLNA video



# Literacy and numeracy standards

Meeting these standards:

- is a benchmark of educational achievement
- is valued by employers and post-school training providers
- ensures all students leave school with the best chance of future success.

## OLNA disability adjustments

- Adjustments will be made to the OLNA conditions, if a student's access to the assessment is significantly affected by a disability, impairment, illness or impediment.
- Evidence of a disability, diagnosed by a specialised medical professional, is required for adjustment.
- The *Guidelines for equitable access for assessments* is available on the Authority website at <https://senior-secondary.scsa.wa.edu.au/assessment/disability-adjustment-guidelines>.

## OLNA — Typical adjustments

Adjustments typically requested for approval by principals include:

- rest breaks and provision for a pause button
- extra time to work
- a reader
- scribe assistance for the writing component
- use of a support person for the reading and numeracy components
- special formats.



## Support — Literacy and numeracy standard

Assistance is available through:

- Foundation courses designed for students who require significant support
- feedback to schools on individual student performance for each OLNA component.

Students who have achieved the minimum standard of literacy and/or numeracy through the OLNA, are not eligible to enrol in Foundation courses.



# The courses our school is offering

- <<school to insert>>





# The programs our school is offering



- <<school to insert>>

# WACE Checker

- The WACE Checker is a tool that Year 12 students can use to check their progress towards meeting the requirements of the WACE.
- It is designed to determine whether students have met (or are expected to meet) each of the requirements for the WACE.
- The WACE Checker is easy to use.
- The WACE Checker is available at <https://wacechecker.scsa.wa.edu.au/> .

# WACE Checker – Start Screen

[SCSA Site](#) [Accessibility](#) [Contact us](#)

 School Curriculum and Standards Authority

## WACE Checker Year 12 - 2021 onwards

This checker will allow you to determine whether you may be able to achieve your WACE in 2021

[Fetch My Data](#) [Tell me more](#) [Add ▾](#) [Calculate](#)

Student has demonstrated (through Year 9 NAPLAN and/or OLNA) the minimum standard of:

Literacy

☐ Reading ☐ Writing ☐ Numeracy

Course ?

Type ?

List ?

Level ?

Grade ?

No courses have been added yet

# WACE Checker – Summary

## WACE Checker Year 12 - 2021 onwards

This checker will allow you to determine whether you may be able to achieve your WACE in 2021

Save My Data Previous Save as PDF

**X** You **have not** met the requirements to achieve WACE in 2021.

### Your results

Based on the information provided:

**X** You **have not** met the requirements to achieve WACE in 2021.

Course ?	Type ?	List ?	Level ?	Grade ?
<b>Course Enrolment</b>				
Dance	General	List A	Unit 3 + 4	B
Dance	General	—	Unit 1 + 2	B
Drama	General	List A	Unit 3 + 4	B
Drama	General	—	Unit 1 + 2	C
English	ATAR	List A	Unit 3 + 4	C
English	—	—	Unit 1 + 2	D
Media Production and Analysis	General	List A	Unit 3 + 4	B
Media Production and Analysis	General	—	Unit 1 + 2	C
Music: Contemporary	ATAR	List A	Unit 3 + 4	B
Music: Contemporary	ATAR	—	Unit 1 + 2	B

#### Breadth and depth requirement

- Completion of
- ✓ at least 20 units or the equivalent
  - ✓ at least 10 Year 12 units or the equivalent
  - ✓ four units from an English learning area course, post-Year 10, including at least one pair of Year 12 units from an English learning area course
  - X** one pair of Year 12 units from each of List A and List B

#### Achievement standard requirement

- Achievement/Completion
- ✓ of at least 14 C grades or higher (or the equivalent) in Year 11 and Year 12 units
  - ✓ of at least six C grades or higher (or the equivalent) in Year 12 units
  - ✓ at least four Year 12 ATAR courses OR at least five Year 12 General courses or equivalent OR a Certificate II (or higher) VET qualification in combination with ATAR, General or Foundation courses

#### Literacy and numeracy standard requirement

- Demonstration
- ✓ of the minimum standard of reading
  - ✓ of the minimum standard of writing
  - ✓ of the minimum standard of literacy
  - ✓ of the minimum standard of numeracy

#### Disclaimer

The WACE Checker is made available by the School Curriculum and Standards Authority (SCSA) for demonstration purposes only. Outputs must not be interpreted as a guarantee students will achieve a Western Australia Certificate of Education (WACE). Individuals are encouraged to consult the WACE Manual for the relevant year, or their school, should they wish to confirm WACE eligibility for a student based on enrolment and predicted/actual achievement.

Course ?	Type ?	List ?	Level ?	Grade ?
<b>Course Enrolment</b>				
Dance	General	List A	Unit 3 + 4	B
Dance	General	—	Unit 1 + 2	B
Drama	General	List A	Unit 3 + 4	B
Drama	General	—	Unit 1 + 2	C
English	ATAR	List A	Unit 3 + 4	C
English	—	—	Unit 1 + 2	D
Media Production and Analysis	General	List A	Unit 3 + 4	B
Media Production and Analysis	General	—	Unit 1 + 2	C
Music: Contemporary	ATAR	List A	Unit 3 + 4	B
Music: Contemporary	ATAR	—	Unit 1 + 2	B

#### Endorsed Program

2 x Endorsed Program

#### Breadth and depth requirement

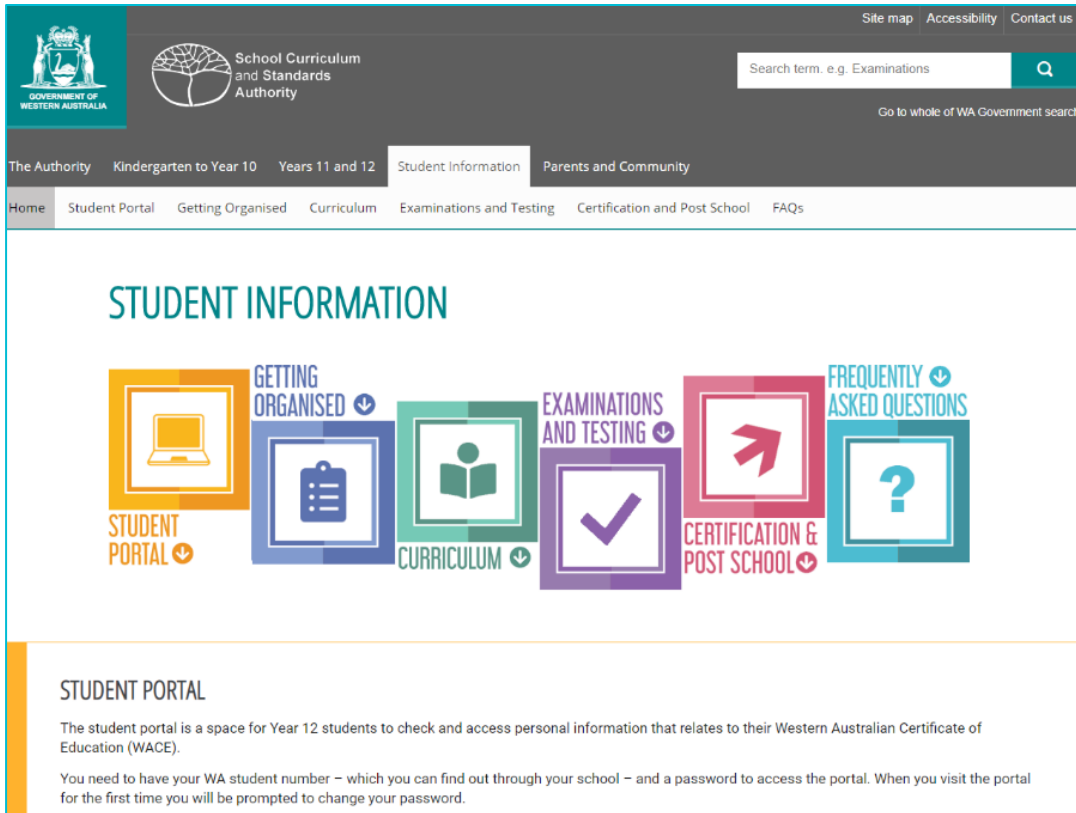
##### Completion of

- ✓ at least 20 units or the equivalent
- ✓ at least 10 Year 12 units or the equivalent
- ✓ four units from an English learning area course, post-Year 10, including at least one pair of Year 12 units from an English learning area course
- X** one pair of Year 12 units from each of List A and List B

# Information for students



# Websites for students and parents

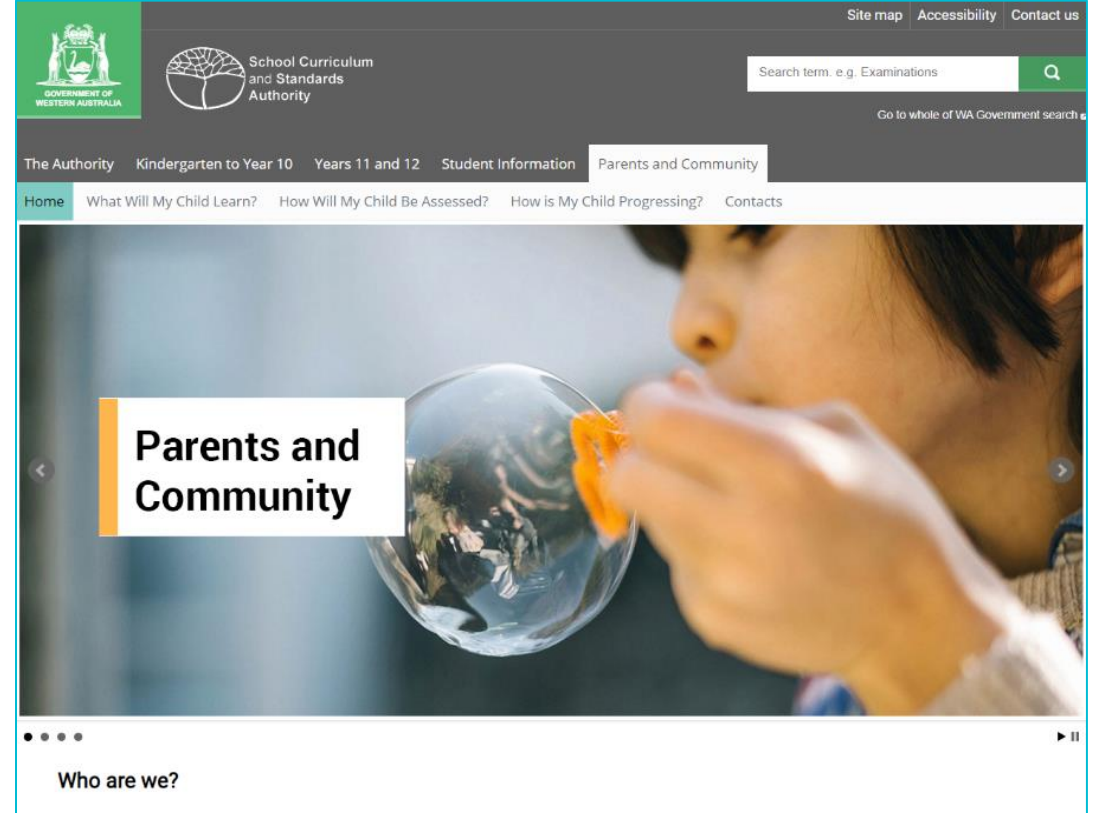


The screenshot shows the SCSA website's 'Student Information' page. The header includes the Government of Western Australia logo, the SCSA logo, and a search bar. The main navigation bar lists 'The Authority', 'Kindergarten to Year 10', 'Years 11 and 12', 'Student Information' (selected), and 'Parents and Community'. Below this, a secondary navigation bar includes 'Home', 'Student Portal', 'Getting Organised', 'Curriculum', 'Examinations and Testing', 'Certification and Post School', and 'FAQs'. The main content area features a large heading 'STUDENT INFORMATION' and a row of five colorful icons with labels: 'STUDENT PORTAL' (orange), 'GETTING ORGANISED' (blue), 'CURRICULUM' (green), 'EXAMINATIONS AND TESTING' (purple), and 'FREQUENTLY ASKED QUESTIONS' (pink). Below the icons, a section titled 'STUDENT PORTAL' provides information about the portal's purpose and access requirements.

**STUDENT PORTAL**

The student portal is a space for Year 12 students to check and access personal information that relates to their Western Australian Certificate of Education (WACE).

You need to have your WA student number – which you can find out through your school – and a password to access the portal. When you visit the portal for the first time you will be prompted to change your password.



The screenshot shows the SCSA website's 'Parents and Community' page. The header is identical to the previous page. The main navigation bar lists 'The Authority', 'Kindergarten to Year 10', 'Years 11 and 12', 'Student Information', and 'Parents and Community' (selected). Below this, a secondary navigation bar includes 'Home', 'What Will My Child Learn?', 'How Will My Child Be Assessed?', 'How is My Child Progressing?', and 'Contacts'. The main content area features a large image of a child blowing a bubble, with a white box containing the text 'Parents and Community'. Below the image, a section titled 'Who are we?' is visible.

**Parents and Community**

**Who are we?**

# Links



[www.scsa.wa.edu.au](http://www.scsa.wa.edu.au)



[info@scsa.wa.edu.au](mailto:info@scsa.wa.edu.au)



<https://facebook.com/SCSAWA>



© School Curriculum and Standards Authority, 2025

This document—apart from any third party copyright material contained in it—may be freely copied, or communicated on an intranet, for non-commercial purposes in educational institutions, provided that the School Curriculum and Standards Authority is acknowledged as the copyright owner, and that the Authority's moral rights are not infringed.

Copying or communication for any other purpose can be done only within the terms of the *Copyright Act 1968* or with prior written permission of the School Curriculum and Standards Authority. Copying or communication of any third party copyright material can be done only within the terms of the *Copyright Act 1968* or with permission of the copyright owners.

Any content in this document that has been derived from the Australian Curriculum may be used under the terms of the [Creative Commons Attribution-Non Commercial 4.0 Australia licence](#).

HPRM 2025/27573